



WHAT IS IT?

The SRH (Sexual Reproductive Health) Watch is a platform designed to **monitor** and **track** Sexual and Reproductive Health (SRH) indicators in support of achieving the Sustainable Development Goals (SDGs) by 2030 and Universal Health Care goals. It aims to **improve maternal health**, **reduce maternal mortality**, and **ensure access to quality SRH services**.

The platform focuses on key areas such as maternal mortality, FP commodity stockouts, family planning data, and the analogous Barcode Track and Trace System (BTTS). It emphasizes the importance of data collection, analysis, and reporting to inform evidence-based programming and policy-making.

WHAT DOES IT DO?

To address SRH challenges, the SRH Watch **implements a surveillance system** which aids on engagement with local government units, capacity building, and regular monitoring meetings. It also advocates for the use of High Impact Practices in family planning, such as postpartum interventions, reduction of stock-outs, mobile outreach missions, social media campaigns, and improved availability of services.

The SRH Watch recognizes the importance of conducting Maternal Death Reviews to identify systemic gaps and improve reproductive health services. It also highlights the need to address SRH needs during emergencies through the Minimum Initial Service Package (MISP), ensuring access to essential SRH services in humanitarian settings.

Overall, the SRH Watch serves as **a platform for monitoring and improving SRH indicators**, contributing to the achievement of SDGs, Universal Health Care goals, and the well-being of individuals and communities.

WEBSITE MAIN COMPONENTS

Maternal Mortality

- Maternal Mortality refers to the deaths of women caused by pregnancy or childbirth complications, within 42 days of pregnancy termination.

- The SRH Watch aims to collect real-time data on maternal mortality from participating local government units. This information is accessible online and helps program managers make informed decisions to address the situation promptly.
- It serves as an early warning system, allowing for timely interventions and improved maternal health outcomes. Please note that the data presented on the SRH Watch website are unofficial counts and subject to review by the Maternal Death Review Teams.

FP Commodity Stockout

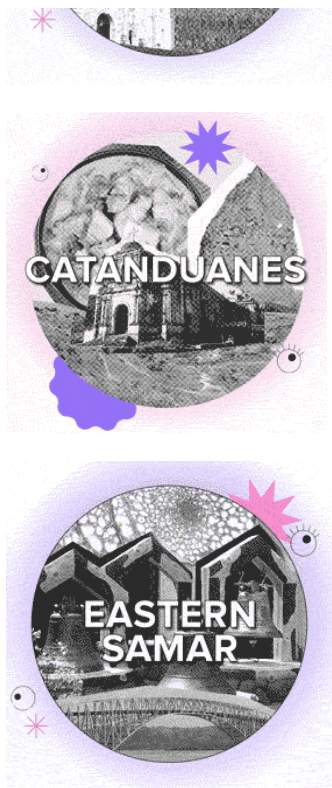
- Captured, collated, and monitored through the BTTS (Barcode Track and Trace System).
- Family planning commodity stockouts occur when there is a lack of contraceptive methods in health facilities or distribution systems. This means that individuals seeking family planning services may not find the desired contraceptives, such as condoms, pills, injections, IUDs, or implants, available.
- Family planning commodity stockouts have significant consequences. They limit access to contraception, leading to unintended pregnancies and reduced reproductive choices. Moreover, they undermine the effectiveness of family planning programs and hinder the achievement of reproductive health goals.
- Addressing stockouts involves improving supply chain management, enhancing forecasting and procurement systems, coordinating efforts among stakeholders, and increasing funding for family planning. Regular monitoring and data collection on stock levels and supply chain performance help identify and resolve stockout issues promptly.

Family Planning Data

- SRH Watch aims to collect and consolidate near-real-time information on these indicators in participating local government units. This data is accessible online 24/7 on this webpage and visible to program managers. It serves as a monitoring tool to track progress in achieving family planning goals through high impact practices.
- The system monitors five high impact practices, which are:
 - a) Postpartum FP provision
 - b) Reduction of FP commodity stockouts
 - c) Conduct of Outreach Missions
 - d) Demand Generation linked with mFP service provision
 - e) Regular provision of MFP services in public health facilities.
- By having access to near-real-time information on these family planning indicators, program managers can analyze the data and make informed decisions to address issues related to family planning service delivery and program implementation promptly

COVERED REGIONS





BENEFITS AND ADVANTAGES

- 1. Real-time data:** The platform provides near-real-time information on family planning indicators, allowing program managers to have up-to-date and accurate data on the progress of their programs. This enables timely decision-making and intervention strategies to address any issues or gaps in service delivery
- 2. Enhanced monitoring:** SRH Watch serves as a monitoring tool that tracks the performance of high impact practices in family planning. Program managers can easily access and analyze the data to identify trends, gaps, and areas for improvement. This helps in evaluating the effectiveness of interventions and making informed adjustments to optimize program outcomes.
- 3. Early warning system:** The platform serves as an early warning system by highlighting any deviations or challenges in family planning service delivery. Program managers can quickly identify and address issues such as stockouts, low utilization of services, or gaps in outreach missions, allowing for timely interventions to prevent disruptions in service provision.
- 4. Improved decision-making:** Access to real-time data and analytics enables program managers to perform better decision analysis. They can identify areas with the greatest need or areas where interventions are most effective, allocate resources strategically, and make informed decisions to address family planning service delivery and program implementation issues promptly.
- 5. Accountability and transparency:** The platform promotes accountability and transparency by providing a centralized platform for data collection and reporting. Program managers can easily track the progress of different indicators and ensure that interventions are implemented effectively. The

availability of online data also enhances transparency by allowing stakeholders, policymakers, and the public to access information on family planning program performance.

6. Enhanced coordination: SRH Watch facilitates coordination among different stakeholders involved in family planning programs. It provides a common platform for data sharing, collaboration, and exchange of best practices. This promotes synergy and coordination among healthcare providers, program managers, and policymakers, leading to more effective and efficient family planning services.

TOWARDS **ACCESSIBILITY AND EFFICIENCY**